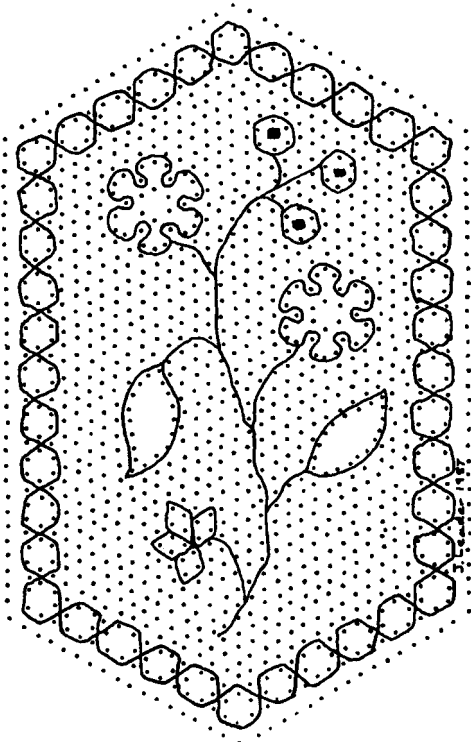


# Bucks Point Flower Spray Motif

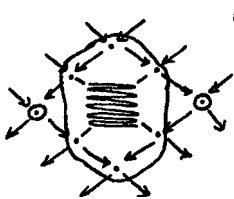


Pricking size: 6.1 x 9.7 cm

The diagrams show how I worked the various parts of the flower spray and not necessarily the best or only ways of working. Gimp pairs or single gimps have to be added or removed as required.

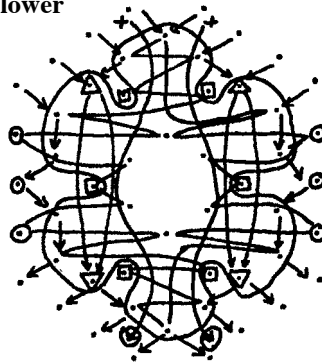
Sample worked with 40 pairs Dragonfly Glacé Cotton 40 and DMC Coton Perlé 8 as gimp — 2 pairs for outer rings and several pairs for the flower spray. DMC Broder Machine 50 or any similar thread would also be suitable.

## Bud



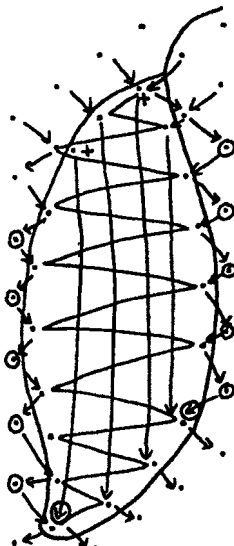
⊙ catch pin worked here

## Flower



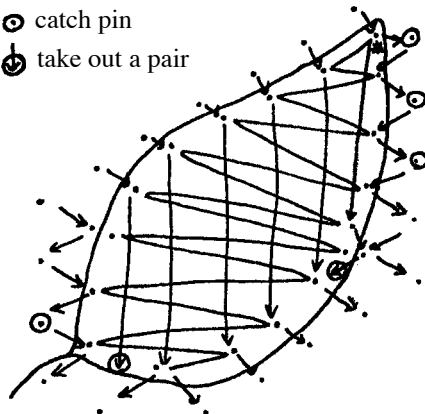
- + add a pair here
- △ do not close round this pin
- ▽ put pin between pairs before working stitch
- ⊙ catch pin worked here
- ⊠ nook pin
- ⊕ take out a pair

## Leaves

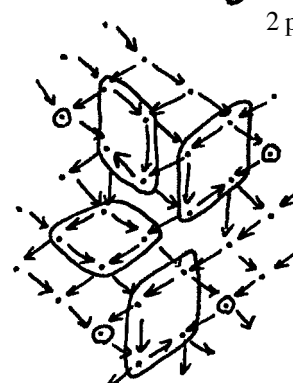


- + add a pair here
- \* add two pairs here (weaver and passive)

- ⊙ catch pin
- ⊕ take out a pair



## Fruit



- ⊙ catch pin  
2 pairs gimp needed